

ST FERRER



ACKNOWLEDGMENT OF COUNTRY

We acknowledge the Traditional Custodians of the land on which we have the honor of working, living and creating.

We pay our respect to their Elders past and present and extend that respect to all Aboriginal and Torres Strait Islander peoples today.

We deliver transformed spaces that take productivity to the next level.

On behalf of St Ferrer Building Contractors, we would like to thank you for taking the time to view our Capability Statement.

St Ferrer is a service-focused building company with a proven track record of delivering high quality construction, fitout, and refurbishment projects, and are recognised as one of Victoria's leading specialists in cladding remediation.

In operation for close to a decade, our primary focus has always been to deliver the best possible building experience to our valued clients. Our commitment lies in creating transformed spaces where people thrive and businesses prosper.

When partnering with a client, we embrace a truly collaborative mindset to achieve the best possible building outcomes. We take pride in nurturing strong relationships with our clients and stakeholders, allowing us to tailor our delivery solutions to the unique requirements of each project. St Ferrer ensures that our allocated project team possesses the appropriate skills and experience to match the intricacies of the individual project, thereby optimising outcomes for all involved parties.

A significant number of our projects are executed in live and complex environments. We understand the significance of seamlessly integrating construction activities with the day-to-day operations of facilities and residences. We have developed tailored systems and methodologies, and our swift and proactive approach ensures minimal delays, allowing each project to progress smoothly. With meticulous planning and unwavering commitment to quality, we demand the best from our trades and team members, ensuring that St Ferrer consistently delivers an exceptional building experience.

St Ferrer is dedicated to continuous progress, unwavering focus, and achieving outstanding results. Our goal extends beyond being a one-time builder; we aim to establish ourselves as your builder of choice for the long term, even well beyond the completion of our projects.

We appreciate the opportunity to submit our Capability Statement and are always available to provide further information, answer any queries, or arrange a meeting to discuss your project requirements in person.



Christopher Bertacco
Director



Daniel Burmeister
Director



WHO WE ARE

Service focused building company.

Who We Are

We specialise in commercial construction, fitout, refurbishment and cladding remediation.

St Ferrer embraces the motto of "Building Experience."

Our approach centres around harnessing our collective expertise to provide our customers with an unparalleled service. We strive to exceed expectations and consistently deliver the best building experience to our valued clients.

St Ferrer is known for delivering high-quality outcomes across commercial construction, fitout, refurbishment, cladding remediation and remedial building works. Based in Port Melbourne, we have been transforming spaces across metropolitan and regional Victoria for close to a decade, with project values ranging from \$50,000 to \$10 million.

We have completed a diverse range of projects for various government and private clients, including Cladding Safety Victoria, EPA Victoria and the Victoria State Government Department of Treasury and Finance, as well as educational institutions such as Monash University, RMIT University, and Victoria University.



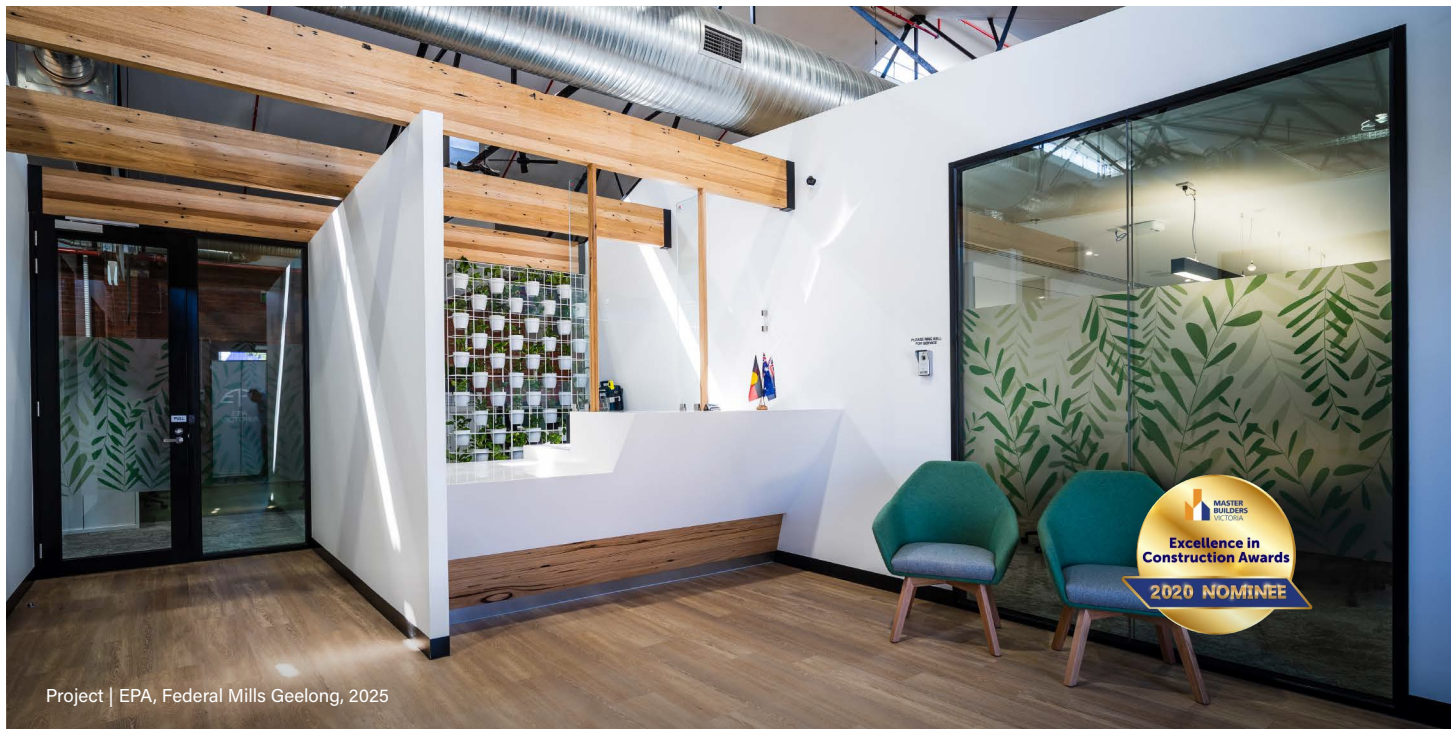
Areas of Expertise

- | | |
|--------------|---------------|
| ■ Education | ■ Corporate |
| ■ Medical | ■ Aged Care |
| ■ Retail | ■ Hospitality |
| ■ Industrial | ■ Strata |

Who We Are

Awards

- Environmental Protection Authority, Federal Mills Geelong - Excellence in Construction Awards – 2020 Nominee
-



Panels & Programs

- RMIT University Building Contractor Works Panel
 - Victorian Government's Cladding Rectification Program, overseen by Cladding Safety Victoria.
-

Accreditations

- Occupational Health & Safety Management System certified to ISO 45001:2018
 - Quality Management System certified to ISO 9001:2015
 - Environmental Management System certified to ISO 45001:2015
 - Pre-qualified on the Construction Supplier Register (CSR) to the Department of Treasury and Finance.
 - Registered Electrical Contractor – REC 36403
-

Our Team

Leadership Team

St Ferrer's leadership team is guided by the expertise and dedication of Directors Chris Bertacco and Daniel Burmeister, whose combined 50+ years of experience in the construction industry drive the company's success.

Their active, hands-on leadership ensures a smooth delivery to every project, from pre-construction planning to on-site execution. Together, they embody St Ferrer's commitment to building experience by fostering a collaborative and client-first approach.



From Left to Right—Christopher Bertacco, Director / Pre-construction Manager and Daniel Burmeister, Director / Construction Director

Our Team

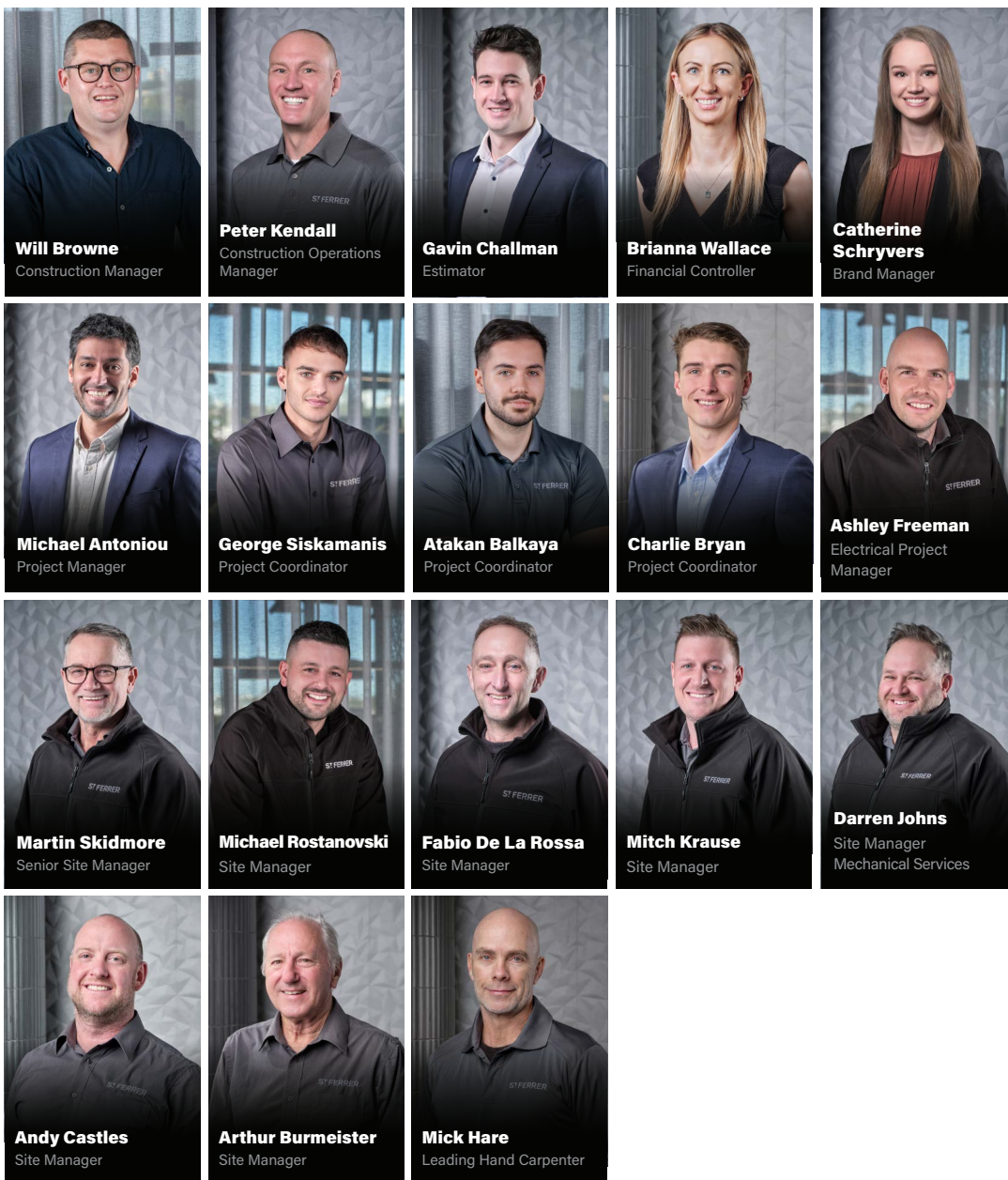
St Ferrer Team

We take great pride in our client service and only employ individuals who embrace our core values of Communication, Commitment and Teamwork.

As a cohesive unit, our team possesses extensive expertise across all aspects of construction, enabling us to tackle some of the most challenging projects within the competitive Melbourne market.

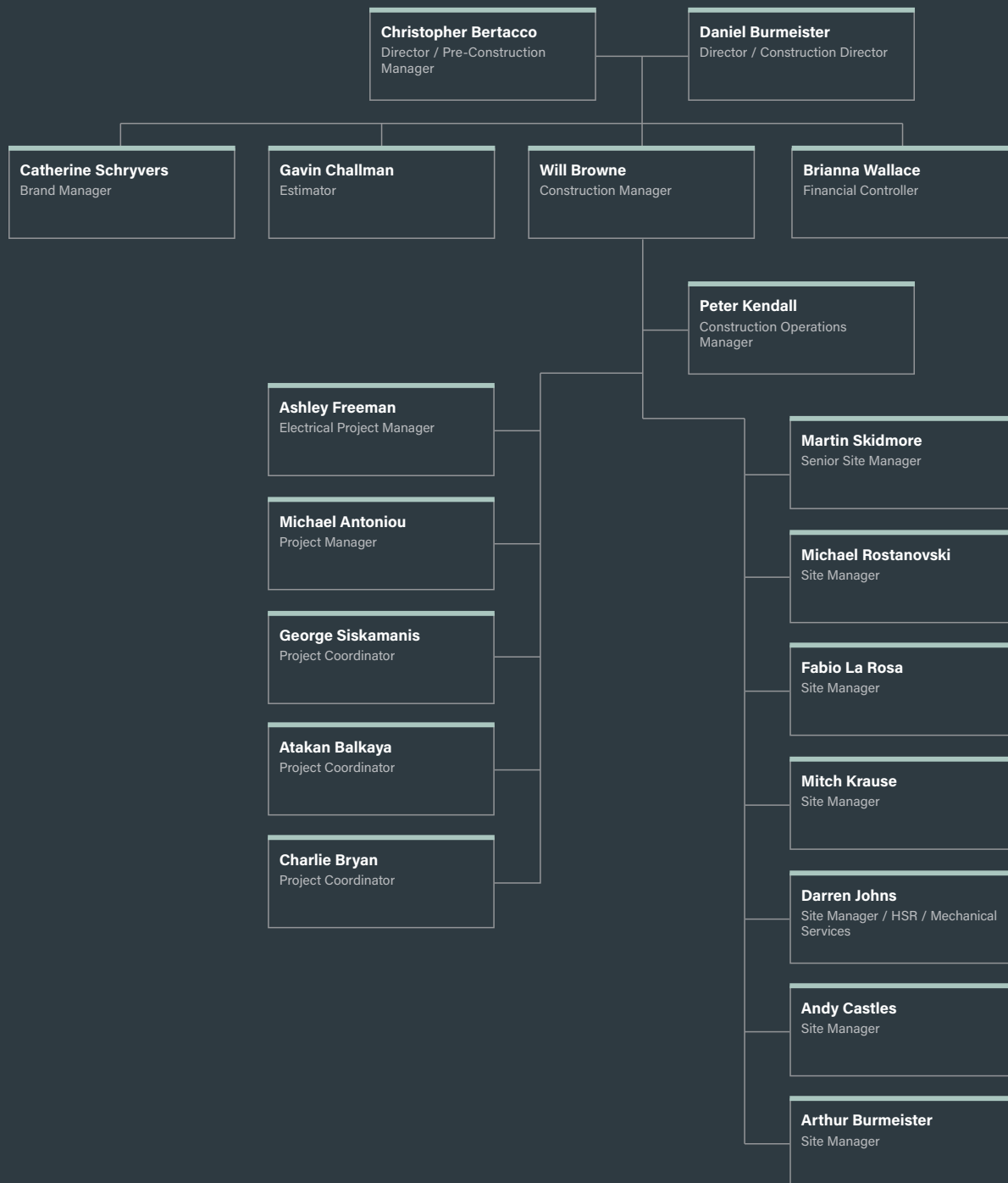
Project Team

St Ferrer ensures that our allocated project team possesses the appropriate skills and experience to match the intricacies of the individual project, thereby optimising outcomes for all involved parties.



Our Team

Organisation Chart





COMMITTED TO THE PRODUCTIVITY OF OUR CLIENTS BUSINESSES

**We create spaces
where people thrive
and businesses
prosper.**

How We Manage Projects

The St Ferrer Approach



Working in Live Environments

We understand the sensitivities of working in live, operational buildings and strive for zero disruption to tenants and neighbours.

As each project is unique, we make sure to understand the fundamentals of how each site operates and identify the key elements that need to be addressed to reduce disruptions. To achieve this, we conduct regular meetings with stakeholders to address any current and future disruptions and mitigation solutions based on each circumstance.

On all projects we;

- Apply a full-time site manager on site, serving as a single point of contact
- Incorporate building management protocols into the site induction process
- Ensure tenants are up to date with weekly meetings and signage in public areas
- Prioritise safety to create a non-threatening environment
- Maintain cleanliness of site with regular cleaning of all areas
- Plan noisy works and bulky materials to be delivered out of hours

Delivery Models

St Ferrer commonly uses 4 delivery models:

Design & Construct

St Ferrer will manage all aspects of the build based on the budget, quality and design outcomes set by the client. We also have the ability to undertake a specialised fast track system if time sensitive delivery is required.

Fast Tract Design & Construct

The St Ferrer fast track system is fine-tuned cost and time saving model primarily aimed at companies that need to act quickly to cater for expansion within their business. These companies don't have the luxury of 3-6 months to engage designers or superintendents to manage the process. We undertake a 2-day intensive specification, layout and needs analysis so we can immediately start documentation for owner's consent and a builder's permit.

Lump Sum (Fixed Price)

A Lump Sum Contract (or Fixed Price Contract) is a contract with a single lump sum price for all the works. Under this model, St Ferrer is responsible for completing the project within the agreed fixed cost set forth in the contract.

Construction Management

St Ferrer simply charge a fee for the staffing and management and a percentage fee on the trade construction cost. That fee typically equates to about 10 to 15 percent. We would supply three quotes and the client with use of the builder's due diligence chooses which one they want to engage.



Early Contractor Involvement

The initial stages of a project are critical; they can define its financial standing and the success of its execution. St Ferrer can be involved in your project at an early stage to provide a number of mutual benefits including specialised construction knowledge applied to early stages, enhanced cost certainty, risk reduction, transparent collaboration and increased value for money.

St Ferrer can provide the follow ECI services:

- Budget Estimates
- Buildability
- Evaluation of Engineering Services
- Design Evaluation
- Value Engineering

Management Systems

Environmental Management

Accredited to ISO 14001:2015, we are committed to achieving the best environmental outcomes across all our projects and operations.

We utilise an accredited Environmental Management System and implement an Environmental Management Plan for each project. These enable us to assess potential environmental impacts and increase our operating efficiency. Our approach includes appropriate waste management practices, such as sustainable procurement, waste management, increased awareness, and monitoring environmental metrics. Recognising the construction industry's significant impact on waste generation and the environment, we are committed to contributing to a sustainable future.



Safety Management

Accredited to ISO 45001:2018, we assume responsibility for the safety of our project sites in accordance with OHS legislation.

Our internal Safety Management System is subject to annual internal and external audits to ensure compliance and continuous improvement. For every project, a site-specific Safety Management Plan is developed, addressing the unique requirements of live environments. The plan addresses all risks and protections associated with, but not limited to, tenants, occupants, the public, visitors, hazardous materials, site establishments and operations, site inductions, subcontractor management and legal compliance. All external safety documents and requirements are submitted and reviewed prior to the commencement of work on-site.



Quality Management

Accredited to ISO 9001:2015, we have a Quality Management System that is internally operated and monitored, enabling us to control and assume all responsibility for the quality of work delivered across our projects.

Our processes adhere to Tier 1 standards, reflecting our stringent commitment to quality. We understand what is involved in the management of methodology to ensure a successful project, and have developed a suite of Inspection and Test Plans (ITPs) to ensure a quality outcome. Each Quality Management Plan is tailored to the specific project, ensuring thorough reviews and checks throughout the process, minimising defects and exceeding industry standards.



Corporate & Social Responsibility

At St Ferrer, we recognise our responsibility to be a socially responsible corporate citizen and engage in purpose driven social and sustainable initiatives.

In line with our values and policies we are committed to:

EEO, Inclusion and Diversity

We provide equal opportunity employment to all staff and those seeking employment and ensure a supportive workplace that is free from discrimination.

Professional Development

We constantly assist in the continual learning and development of our staff, as we believe in investing in people and their future and providing opportunities for both professional and personal development.

Work Health & Safety

We emphasise the importance of safety in the workplace and ensure that we provide our employees and contractors with safe and healthy working conditions.

Sustainability

We are committed to reducing our carbon footprint and improving the overall efficiency of our operations by setting realistic objectives and targets.

Social Procurement

We aim to leverage our procurement processes and purchasing power to generate social value. This includes procurement through local businesses, social enterprises, and Aboriginal businesses.

Supporting Safe & Fair Workplaces

We are commitment to conducting business in line with the highest standards of conduct and ethical behaviour, and in accordance with relevant laws and regulations.



Corporate & Social Responsibility

CSR Activity

St Ferrer encourages and supports our staff to donate their time to charitable pursuits. Several of our staff members and senior board members currently volunteer their time to charitable organisations .

Additionally, St Ferrer regularly give to charitable organisations and causes that resonate with our business values, as well as those that hold significance for our team members.

The National Breast Cancer Foundation is Australia's leading organisation dedicated to funding life-saving research for the prevention, detection, and treatment of breast cancer. Along with regular donations, St Ferrer held a fundraiser in 2024 and raised over \$12,800.

Dementia Australia provides vital support, services, and advocacy for individuals impacted by dementia and their caregivers. St Ferrer is a regular supporter of the organisation.

The "Allies of Change - Preventing Violence Against Women" event, held at Parkdale Supers Football Club and facilitated by SALT (Sport and Life Training), was proudly sponsored by St Ferrer. The event focused on educating and equipping men to be proactive allies in preventing violence against women.

Young Diggers provides support and rehabilitation programs for current and ex-serving military personnel, focusing on mental health, well-being, and community reintegration. St Ferrer is a regular donor.

R U OK? Day is a national initiative that encourages meaningful conversations to promote mental health awareness and prevent suicide. St Ferrer observes R U OK? Day annually, promoting workplace awareness surrounding mental health.

Sleep at the 'G', hosted by Melbourne City Mission, raises vital funds to support young people experiencing homelessness. In 2025, nine St Ferrer team members participated, collectively raising \$9,115 to help provide essential services and long-term support for vulnerable youth across Victoria.



National Breast Cancer Foundation Fundraiser, 2024



R U OK? Day, St Ferrer Event, 2025



Sleep at the G' Fundraiser, 2025



Allies of Change - Preventing Violence Against Women, Event, 2024



OUR EXPERTISE

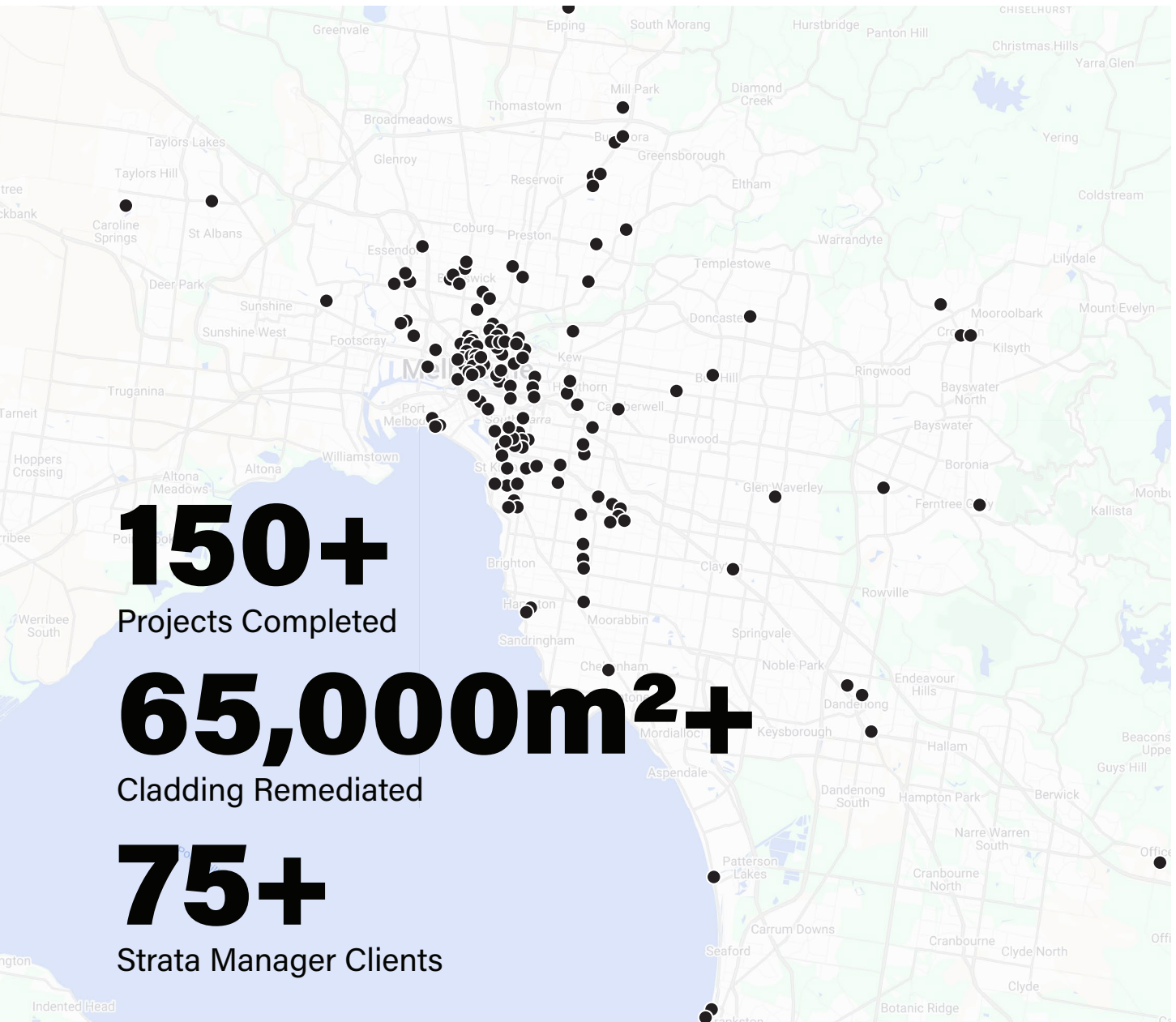
We deliver transformed spaces that take productivity and profitability to the next level.

Cladding Remediation Specialists

We are cladding remediation specialists, delivering projects ranging from \$50,000 to \$10,000,000.

St Ferrer is united in our vision of making Victorians safer by reducing the risks associated with combustible cladding. We support the strata community, working alongside strata managers, building facility managers, owners and owners corporations, across residential and commercial buildings.

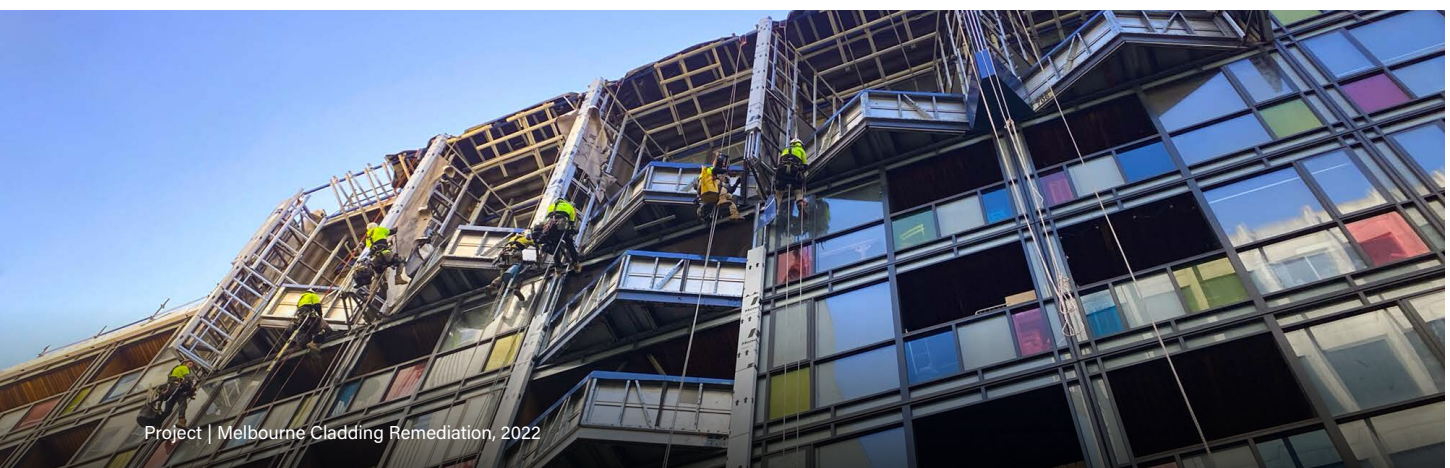
Since 2019, St Ferrer has supported the Victorian Government's Cladding Rectification initiative, collaborating with Cladding Safety Victoria to address and remediate potentially hazardous environments. Within the first three years, we reduced the risk associated with combustible cladding on over 120 buildings.



Cladding Remediation Specialists

Efficient, Agile Workflow

We are proud to be one of the few Cladding and Facade remediators in Victoria that offers a complete end-to-end service. From detailed site inspection reports and design to the supply and installation of compliant non-combustible cladding, we provide a comprehensive cladding rectification process. We provide professional advice and guidance throughout every step of the cladding remediation project.



Project | Melbourne Cladding Remediation, 2022

Live, Tenanted Buildings

St Ferrer understands the delicate nature of working in live tenanted buildings and we strive to work efficiently in order to minimise disruption to occupants. We are highly capable of resolving disputes between key stakeholders, all the while ensuring the safety of residents and construction workers.

Quality Management

We have a Quality Management System that is internally monitored, enabling us to control and assume all responsibility for the quality of our cladding rectification projects. We carry out and operate projects under our quality management system to provide our clients with a service that not only achieves industry standards for quality and efficiency but strives to surpass these standards at every opportunity.

Product Brands

As experienced Cladding Remediators, we have designed non-combustible cladding solutions for a variety of unique projects. Combining our knowledge of the industry as well as access to premium materials and brands, we deliver within time constraints and within a budget

St Ferrer's Cladding Remediation Workflow

01 Tender

- ✓ Site Inspection and Review
- ✓ Scope of Work Establishment
- ✓ Environmental Management Strategies:
 - Noise, Dust, Recycling and Waste Mitigation
- ✓ Best Fit Material and Product Selection
- ✓ Preliminary Program Development
- ✓ Project Delivery Methodology
- ✓ Pre-Emptive Tenant Liaison & Disruption Reduction
- ✓ Consultancy Requirements
- ✓ Permits and Authorities Survey

02 Owners Corporation



**CONTRACT/
PROGRAM**

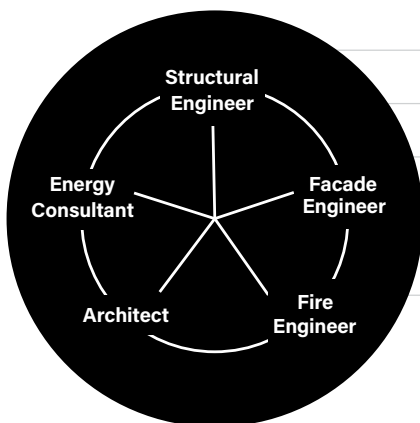


**BANK
GUARANTEES**



**DBI
INSURANCE**

03 Design



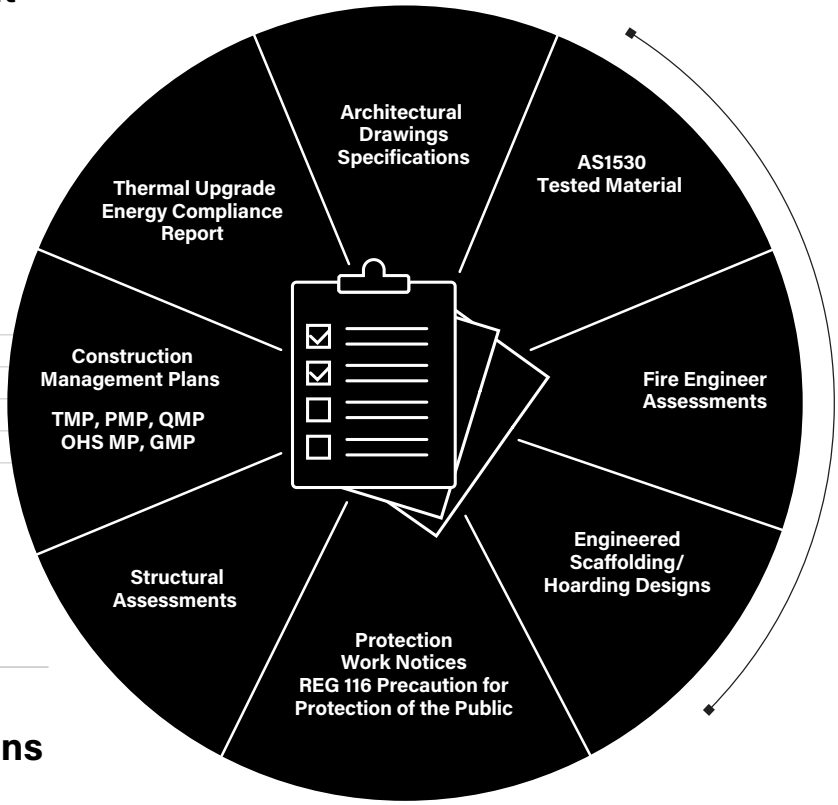
BEST IN CLASS

- ✓ Design endorsement from Relevant Building Surveyor (RBS)
- ✓ Only use code marked products
- ✓ Control samples sign off
- ✓ Thorough existing conditions inspection
- ✓ Thorough engineering inspection demonstrating best performance solutions

04 Building Permit Application





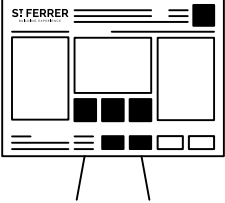
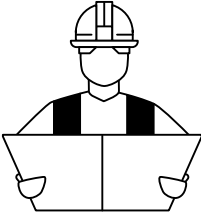


☑ Designated Relevant Building Surveyor (RBS) Portal for bulk document submission including:

- TMP: Traffic Management Plan ■
- PMP: Project Management Plan ■
- QMP: Quality Management Plan ■
- OHS MP: Safety Management Plan ■
- CMP: Construction Management Plan ■



05 Tenant Communications

☑ All tenant & Owners Corp pre-construction information meeting

 <p>Door Handle Hangers</p>	 <p>St Ferrer Banner</p>	 <p>Statutory Signage</p>	 <p>Letter Drop</p>
 <p>Centrally Located Notice Board with Daily Updates</p>	 <p>Site Specific Tenant Liaison Officer</p>	 <p>WhatsApp Group with Tenants</p>	 <p>Workers in Uniforms with Worker Photo IDs</p>

06 Safety

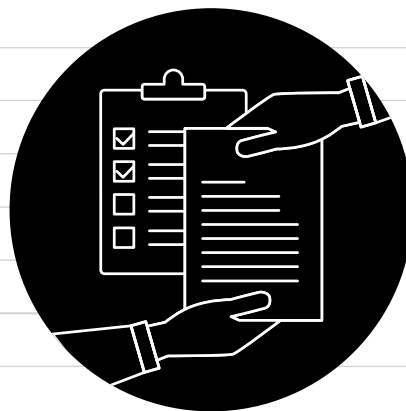
- ✓ Site Management Plan & Project Management Plans (PMP) Reviews
- ✓ Inductions & Toolbox Talk
- ✓ Site Management
- ✓ Safe Work Method Statement (SWMS) Reviews
- ✓ Third Party Scaffold Review
- ✓ Lost Time Injury (LTI) Reporting

08 Quality Assurance & Stakeholder Management

- ✓ Clerk of Works (CoW) collaboration to work towards better outcomes
- ✓ Inspection Test Plans (ITP) to ensure quality and compliance
- ✓ Documented Waste Management (EPA)
- ✓ Regular Engineer's Inspections
- ✓ Project Management photo documentation of all work areas

09 Handover

- Building Notice Removal ✓
- Handover Manual ✓
- Certificate of Final Completion ✓
- Certificate of Practical Completion ✓
- Compliance Certifications ✓
- As-Built Drawings ✓



- ✓ Engineers Reports
- ✓ Asset Protection Assessment
- ✓ Final Inspections
- ✓ Certificate of Practical Completion
- ✓ Full Site Clean Post Decamp + Make Good

07 Delivery



ACCESS & ELEVATED WORK PLATFORM (EWP)

- Scissor Lifts + Scaffold + Booms + Ropes
- Site Safety and Construction Methodology Audit
- Routine Safety Walks and Plant Service Checks



ENVIRONMENTAL MANAGEMENT

- Waste and Disposal Management Plans
- Licensed Disposal Centre's and Disposal Dockets
- Noise Mitigation Techniques
- Dust Extraction and Mitigation



EXPERIENCED TRADESPEOPLE

- High Precision Workmanship
- Professional and Obliging
- Materials Management
- White Glove Clean

Cladding Remediation Projects

206 A'Beckett Street, Melbourne, \$100 thousand

200 Albion Street, Brunswick, \$95 thousand

221 Alma Street, Brunswick, \$400 thousand

7-9 Archibald Street, Box Hill, \$1.3 million

10 Arnott Street, Clayton, \$750 thousand

175 Balaclava Road, Caulfield North, \$470 thousand

8 Bangs Street, Prahran, \$700 thousand

285 Barkley Street, St Kilda, \$250 thousand

50 Barry Street, Carlton, \$1.4 million

101 Bay Street, Port Melbourne, \$1.1 million

21 Beaconsfield Parade, Port Melbourne, \$190 thousand

44 Bedford Road, Collingwood, \$260 thousand

30 Beetham Parade, Rosanna, \$210 thousand

16 Bennetts Lane, Melbourne, \$1.4 million

97-99 Brickworks Drive, Brunswick, \$110 thousand

463 Bridge Road, Richmond, \$300 thousand

1 Brunswick Road, Brunswick, \$2.3 million

500 Brunswick Street, Fitzroy, \$825 thousand

Fire Rescue Victoria—450 Burnley Street, Richmond, \$55 thousand

347 Camberwell Road, Camberwell, \$300 thousand

46 Cambridge Street, Collingwood, \$400 thousand

619 - 623 Canterbury Road, Surrey Hills, \$280 thousand

1 Centre Square, Officer, \$1.5 million

3 Charnwood Road, St Kilda \$570 thousand

231-232 Charman Road, Cheltenham, \$250 thousand

1 Cremorne Street, Cremorne, \$30 thousand

163 Cremorne Street, Cremorne, \$55K

4 Cromwell Road, South Yarra, \$60 thousand

Dandenong City Council, \$40 thousand

Dandenong City Council, \$50 thousand

863 - 865 Doncaster Road, Doncaster East, \$105 thousand

1 Eden Street, Heidelberg, \$500 thousand

23 Edith Street, Dandenong, \$1.2 million

2 Egerton Road, Armadale, \$170 thousand

25 Elizebeth Street, Melbourne, \$32 thousand

25 Elizabeth Street, Melbourne, \$30 thousand

90 Epping Road, Epping, \$250 thousand

44 - 50 Eucalyptus Drive, Maidstone, \$520 thousand

268 Flinders Street, Melbourne, \$735 thousand

532 Flinders Street, Melbourne, \$1.7 million

151 Burnley Street, Richmond, \$175 thousand

16 Garfield Street, Richmond, \$1 million

1 Gatehouse Drive, Kennsington, \$3.2 million

474 Glenferrie Road, Hawthorn, \$1 million

1044 Glenhuntley Road, Caulfield, \$350 thousand

Good Shepherd Lutheran Primary School, \$240 thousand

162-182 Gore Street, Fitzroy, \$1.25 million

65 Grosvenor Street, Balaclava, \$50 thousand

1 Gumbri Place, Brunswick, \$105 thousand

19 Hall Street, Moonee Ponds, \$810 thousand

2A Henry Sreet, Windsor, \$400 thousand

25 - 29 Heygarth Street, Echuca, \$950 thousand

1325 High Street, Malvern, \$550 thousand

405 High Street, Northcote, \$250 thousand

120 High Street, Windsor, \$475 thousand	24 Milton Street, Elwood, \$650 thousand
270 High Street, Windsor, \$500 thousand	556 Moreland Road, Brunswick, \$220 thousand
8 Hope Street, Brunswick, \$1.8 million	9 Morton Avenue, Carnegie, \$500 thousand
56 Hotham Street, St Kilda, \$750 thousand	533 Mt Alexander Rd, Moonee Ponds, \$2.5 million
135 Inkerman Street, St Kilda, \$4 million	211 Mt Dandenong Road, Croydon, \$230 thousand
23 Izzet Street, Prahran, \$650 thousand	300 Neerim Road, Carnegie, \$1.1 million
20 James Street, Dandenong, \$750 thousand	336 Neerim Road, Carnegie, \$1.9 million
28 Jersey Parade, Carnegie, \$270 thousand	395 Neerim Road, Carnegie, \$1.2 million
10 Johnson Street, Carrum, \$170 thousand	7 Newry Street, Richmond, \$900 thousand
39 Kingsway, Glen Waverley, \$180 thousand	494 North Road, Ormond, \$2.4 million
14 Landale Avenue, Croydon, \$80 thousand	30 Oliver Lane, Melbourne, \$800 thousand
33 La Trobe Street, Melbourne, \$225 thousand	80 Ormond Street, Kensington, \$550 thousand
68 La Trobe Street, Melbourne, \$650 thousand	16-26 Orr Street, Carlton, \$150 thousand
61 Lees Street, McKinnon, \$250 thousand	Latrobe Uni—4 Park Drive Bundoora, \$120 thousand
15 Lithgow Street, Abbotsford, \$750 thousand	15-25 Pickles Street, Port Melbourne, \$1.6 million
Little Hero Apartments, Melbourne, \$2 million	1320 Plenty Road, Bundoora, \$360 thousand
Long Island Drive, Frankston, \$350 thousand	170 Princes Street, Kew, \$200 thousand
225 Lonsdale Street, Dandenong, \$50 thousand	Quest Apartments, Caroline Springs, \$1 million
1 Lygon Street, Brunswick, \$600 thousand	11 Railway Crescent, Hampton, \$1.1 million
36 Lynch Street, Hawthorn, \$455 thousand	17 Riversdale Road, Hawthorn, \$1.5 million
16 Macquarie Street, Prahran, \$400 thousand	RMIT Cladding Pack 1, \$1.5 million
17 Macquarie Street, Prahran, \$747 thousand	463 South Road, Bentleigh, \$310 thousand
21-25 Macquarie Street, Prahran, \$250 thousand	41-43 Spray Street, Elwood, \$100 thousand
1274 Malvern Road, Malvern, \$2.1 million	10 Stanley Street, Collingwood, \$900 thousand
118-126 Maribyrnong Road, Moonee Ponds, \$520 thousand	22 Stanley Street, Collingwood, \$370 thousand
6 Mater Street, Collingwood, \$170 thousand	38 Station Street, Ferntree Gully, \$1.3 million
8 Mawbey Street, Kensington, \$400 thousand	49-53 Stawell Street, West Melbourne, \$300 thousand
MCG Bay 39-40, Richmond, \$75 thousand	79 Stevenson Street, Kew, \$200 thousand
MCG Bay 50, Richmond, \$215 thousand	21 Stewart Street, Richmond, \$1 million
Mercedes Benz—135 Kings Way, Southbank, \$116 thousand	392 St Georges Road, Fitzroy North, \$320 thousand

370 St Kilda Road, Melbourne, \$1.7 million

555 St Kilda Road, Melbourne, \$1.2 million

393–401 St Kilda Road, Melbourne, \$600 thousand

521 St Kilda Street, \$450 thousand

436 Stud Road, Wantirna South, \$750 thousand

120 Studio Lane, Docklands, \$550 thousand

604–640 Swanston Street, Carlton, \$630 thousand

306 Sydney Road, Brunswick, \$150 thousand

159 Taylors Road, St Albans, \$300 thousand

119 Tenneyson Street, Elwood, \$180 thousand

332 Toorak Road, South Yarra, \$1.2 million

185 Union Street, Brunswick, \$170 thousand

72–78 Upper Heidelberg Road, Ivanhoe, South Tower, \$1.4 million

72–78 Upper Heidelberg Road, Ivanhoe, North Tower, \$1.7 million

15–19 Vickery Street, Bentleigh, \$4.3 million

166 Wellington Parade, East Melbourne, \$516 thousand

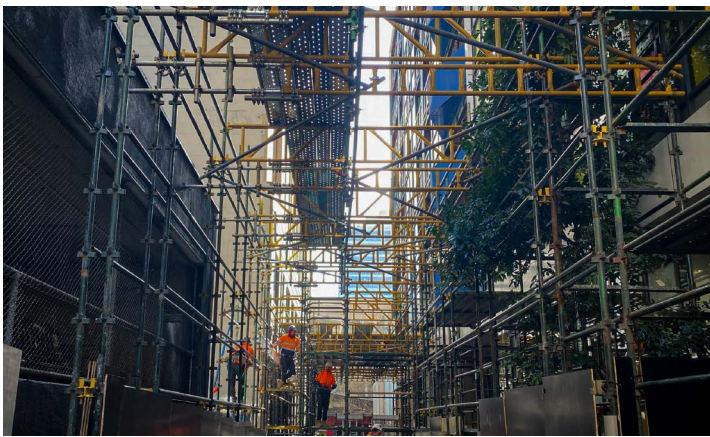
211 Wellington Street, Collingwood, \$200 thousand

189 Weston Street, Brunswick, \$95 thousand

43 Willis Street, Hampton, \$850 thousand

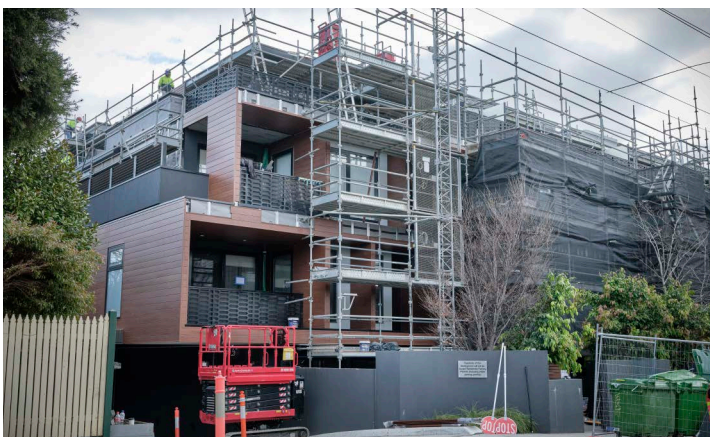
38 Yarra Street, Abbotsford, \$460 thousand





LOCATION	CLIENT	ARCHITECT	VALUE	DURATION
Melbourne	Deloitte PDS Group	JMA Architects	\$2,000,000	24 weeks

Little Hero Apartments Cladding Remediation



LOCATION

CLIENT

ARCHITECT

VALUE

DURATION

Bentleigh

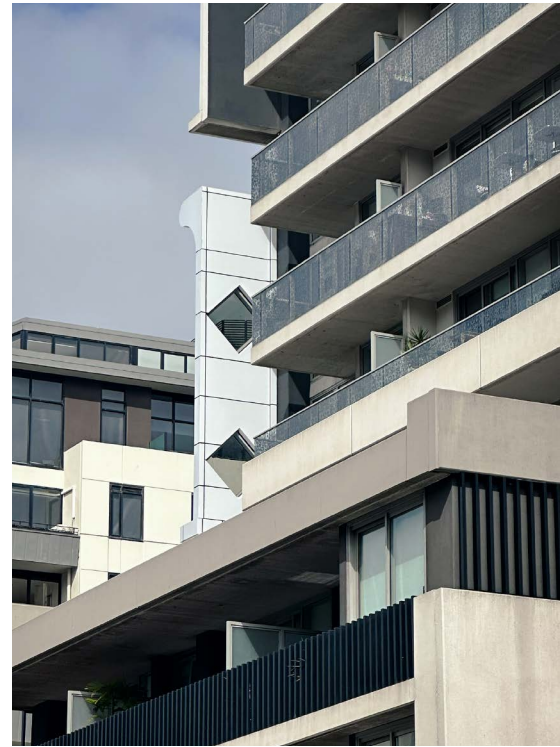
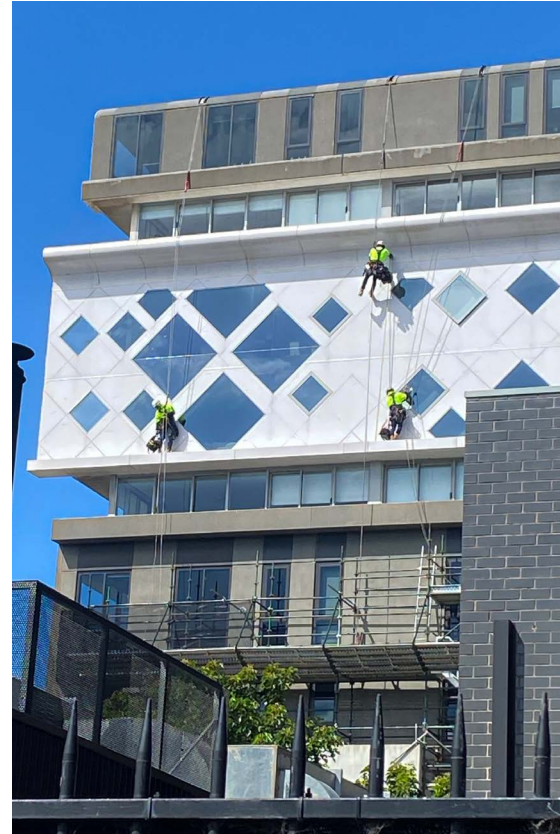
Cladding Safety Victoria

JMA Architects

\$4,300,000

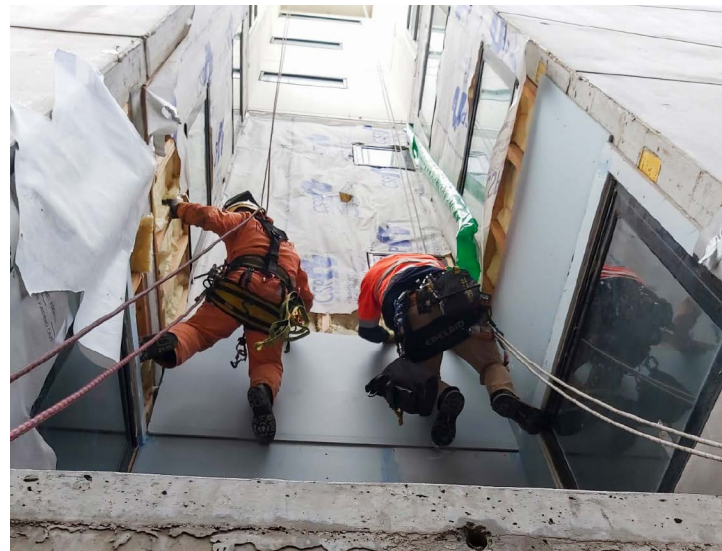
30 weeks

Bentleigh Cladding Remediation



LOCATION	CLIENT	ARCHITECT	VALUE	DURATION
Port Melbourne	Cladding Safety Victoria	JMA Architects	\$1,100,000	20 weeks

Port Melbourne Cladding Remediation



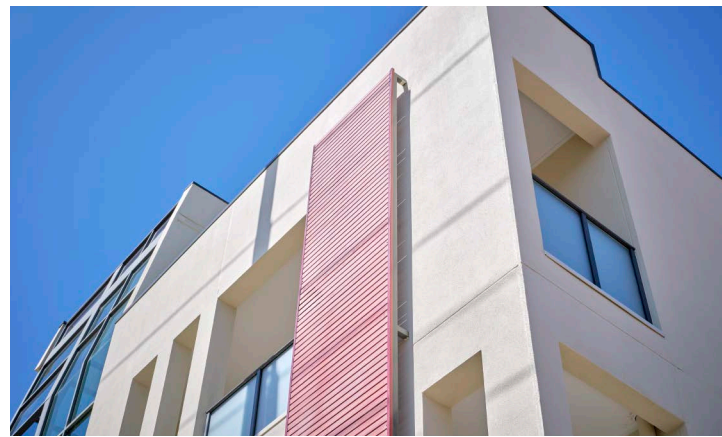
LOCATION	CLIENT	ARCHITECT	VALUE	DURATION
Brunswick	Cladding Safety Victoria	JMA Architects	\$1,800,000	24 weeks

Brunswick Cladding Remediation



LOCATION	CLIENT	ARCHITECT	VALUE	DURATION
Melbourne	Cladding Safety Victoria	JMA Architects	\$1,700,00	20 weeks

Melbourne Cladding Remediation

































LOCATION	CLIENT	ARCHITECT	VALUE	DURATION
Ormond	Cladding Safety Victoria	JMA Architects	\$2,400,000	32 weeks

Ormond Cladding Remediation

Our Thriving Clients

St Ferrer has established itself as a trusted partner in delivering high-quality cladding remediation projects across Victoria, working closely with strata managers, building facility managers, and owners corporations across residential and commercial buildings.

We are proud to have partnered with Cladding Safety Victoria since 2019, whilst extending our experience to working with leading strata companies such as Advance Strata Consulting and MBCM Strata Specialists.

ST FERRER

ABN 78 614 959 492
301/18 Woodruff Street,
Port Melbourne, VIC 3207

T. 03 8593 7375
E. enquiries@stferrer.com.au
www.stferrer.com.au

